



## **Dates For Your Diary**

2<sup>nd</sup> November – Fireworks and Bonfire, Playingfield, 6.30pm

3<sup>rd</sup> December – Christmas Market and Christmas Tree Festival,  
Village Hall and St Peter's church

6<sup>th</sup> January – Twelfth Night, Village Hall. Doors open 7pm

## **WHAT'S ON IN THE VILLAGE HALL**

**Yoga**: Classes every Monday evening 6.00pm

**W.I.**: Meets on the 2<sup>nd</sup> Tuesday of every month at 7.30pm

**Carpel Bowls**: Meets on the 2<sup>nd</sup> & 4<sup>th</sup> Wednesday of each month at  
7.30pm

**Table Tennis**: Meets on the 1<sup>st</sup> & 3<sup>rd</sup> Wednesday of each month  
7.30pm

**Whist Drive**: Meets on the third Friday of each month at 7.30pm

**Film Night**: Shows 3<sup>rd</sup> Saturday of each month. Doors 7.00pm for  
7.30pm

## **COMPLAINTS**

### **SUGGESTIONS**

### **COMPLIMENTS**

**The Village News team would welcome your feedback**

**Do you have any comments about what we do, what's going well, anything you'd like us to change. Please feel free to contact us:**

**Email – [mtavernor@btinternet.com](mailto:mtavernor@btinternet.com) Phone – Jo Tavernor  
01449 737793**

**Reminder to contributors**: Please be aware that items submitted after the **Deadline** cannot be guaranteed to appear in the magazine.



**FELSHAM  
FIREWORKS  
Spectacular**

**Playing Field**

**THURS 2ND NOV**

**GATES OPEN 6.30PM**

**BONFIRE LIT 6.45PM**

**FIREWORKS START 7.15PM**

**FREE ADMISSION**

Barbeque, Pumpkin Soup & Licenced Bar

Glowsticks on sale at the gate

**NO SPARKLERS PLEASE**

## ALTERNATIVE SERVICES

WINDOW CLEANING COMPANY

EST: 1991

We are a window cleaning company, have been around 20 years.

My name is Nigel.

If you would like a quote, please ring me or send an email.

Mob 07775 858052

Email [nigel.mess22@ntlworld.com](mailto:nigel.mess22@ntlworld.com)

## CHIMNEY SWEEP

### ECO SWEEP CHIMNEY SERVICES

- NEW POWER SWEEPING METHOD USED FOR A MORE THOROUGH CHIMNEY CLEAN THAN BRUSHES.
- INDUSTRIAL HEPA FILTERED VACUUM.
- FULLY INSURED.
- INSURANCE RECOGNIZED CERTIFICATES ISSUED.
- SPOTLESS, RELIABLE AND FRIENDLY SERVICE.
- ALL CHIMNEYS, WOOD BURNERS, AGA, BOILER FLUES SWEPT.
- GUILD OF MASTER SWEEPS CERTIFICATED MEMBER.



TEL. 01359 232335



## ANDY'S FENCING AND GARDENS

call Andy for free quote

All fencing  
garden maintenance  
garden building work  
grass and hedge cutting  
concrete bases etc

01449 403050

07748 785197

**A cheerful bunch of volunteers** met on a sunny Saturday morning in late October and planted several tonnes of daffodil bulbs in the verge to the front of St Peter's Church in Felsham.

Many thanks to Chris Bassett for donating the bulbs, to Ria Crosbie for advertising the event on the Facebook Community page, and to Mr Kukula for permission to plant them on his land. Thanks are also extended to the parish council who will now undertake the ongoing maintenance of them.

Now the whole village can look forward to the results of this very positive community collaboration early next spring when the daffodils will fill the village with colour.



## *Walnut Tree Designs*

BESPOKE CURTAINS & BLINDS

*Free design consultation in your own home-Complete made-to-measure service for all your soft furnishings requirements  
CUSHIONS - FABRICS - TRIMS- POLES - UPHOLSTERY - PELMETS - HEADBOARDS - ROMAN/VENETIAN & ROLLER BLINDS*


Call Terri or Vikl on Tel: 01284 828263 M:078269 30011

email:walnuttreedesigns@gmail.com



**KING'S**

## Property & Garden Care

Grass & Hedge cutting   
General care and maintenance



Window Cleaning

Pure water treatment using pole and reach system



Interior/Exterior decorating

General repair work

Phone 01449 737495 mob 0797 146 5372

**ODL** Outdoor Living

Beautiful  
Design &  
Quality at  
Affordable  
Prices

Garden Furniture  
Log Cabins • BBQs  
Artificial Grass • Fire Pits  
Accessories


**BESPOKE WORKSHOP**  
Gazebos • Orangeries  
Balconies • Car Ports  
Rustic Furniture



 [www.odl.online](http://www.odl.online)

**Visit Our Showroom**

Overland Business Park,  
Sudbury Rd

 01284 388685

Bury St Edmunds, IP30 0UL

# *Crawford Electrical Contractor*



## **Mark Crawford**

**Domestic and Commercial Electrician**

**Telephone: 01449 736043 / 07811 897878**

*EE* Electrical



## **VILLAGE FRIENDS**

The next meeting will be held at West Lodge on November 16th 2017 2-4pm. Advent and Christmas themed activity.

Village Friends is an over 60's friendship group of men & women from various villages who meet once a month and enjoy tea together.

**All welcome, just come along.**

The meetings are held at:  
Moat House, Felsham.  
Sue Jell 01284 828892 or  
West Lodge, Bradfield St George.  
Lynn Cardale 01284 386327

### **MACMILLAN COFFEE MORNING**

Thanks to everyone who supported this event at the end of September. The total raised was £660.00 for the charity. The money will make a real difference!

## **Joan's Trips**

Our next outing will be a visit to:

*Highways Garden Centre, Norwich  
on Tuesday 21<sup>st</sup> November*

Seats will cost £12 and the coach will leave the Village Hall car park at 9.30am.

Anyone wishing to book a seat can contact:  
Tricia Wilson – 01449 736330 or Eileen Turner – 01449 737289

# **Taylor's Solid Fuels LTD**

**Family run since 1946**

**Regular fortnightly Solid Fuel deliveries in your area.  
Competitive prices and a full range of products.**

***"Don't Shiver We Deliver"***

Quality top soils and aggregates. Bulk bags and Tipper loads from 1-20 tonnes

Tel: 01842890568 or see us on [www.taylorssolidfuels.co.uk](http://www.taylorssolidfuels.co.uk)

**Rothwell's**  
Carpet Cleaning

**01638 428 060**  
[www.Rothwells.biz](http://www.Rothwells.biz)

## **Carpet Cleaning**

**Stone Floor, Upholstery & Rug Cleaning.**

*A few points that make us stand out from the others,*

Rothwell's has been in business since 1993.

We're an honest local family firm.

Our large truck mounted machines mean more cleaning  
& drying power for the best results possible.

Members of both the NCCA and TACCA.

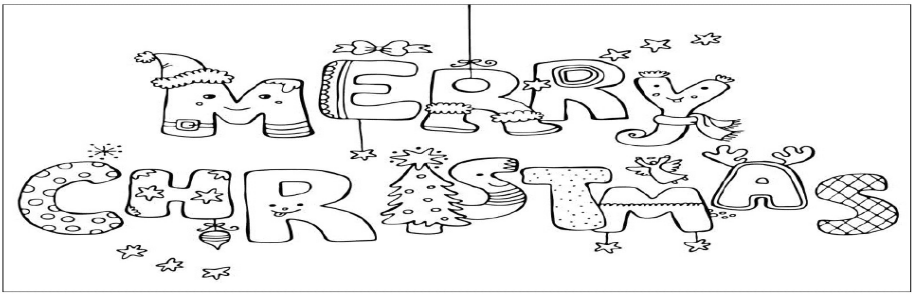
We will move the furniture for a thorough clean.

100% satisfaction or it's FREE.

*Call Oliver and Max Campbell for expert help today.*

Rothwell's, Malting End, Kirtling, Newmarket, CB8 9HH





## **FELSHAM AND GEDDING CHRISTMAS MARKET**

**SUNDAY DECEMBER 3rd from 11.00 am till 4.00 pm**

FOOD AND CRAFT STALLS

FATHER CHRISTMAS

REINDEER HUNT

ACTIVITIES FOR CHILDREN AND ADULTS

HOT FOOD, CAKES, TEA AND COFFEE, MULLED WINE

CHRISTMAS RAFFLE AND TOMBOLA

FELSHAM CHURCH WILL HAVE A CHRISTMAS TREE FESTIVAL OPEN UNTIL JANUARY 6TH

CHRISTINGLE SERVICE AFTER THE MARKET IN ST PETER'S CHURCH AT 4.30 PM

We would appreciate gifts or donations of **CAKES** and **RAFFLE PRIZES**. They can be brought to the Hall on the Saturday or left at Beryl Meed's opposite the Post Office during the previous week

ALL PROCEEDS WILL GO TO THE 2 CHURCHES AND THE VILLAGE HALL

**WE HOPE YOU WILL COME AND HAVE A GREAT DAY**



# Cockfield Computer Circle

Booking is now open for the 2017-18 Cockfield Computer Circle (CCC) Programme which begins on Monday November 6th 2017 and runs to Monday March 19th 2018.

The CCC sets out to help participants improve their computing knowledge and gain confidence in carrying out common tasks. This is achieved through a combination of teaching and sharing of experience amongst participants in a relaxed environment. Some topics are aimed at beginners seeking to learn new skills and gain more confidence in using a computer; other topics are aimed at the more experienced user seeking to push their knowledge a little further.

The Programme is divided into 2 blocks. Block 1 is aimed at beginners seeking to develop their skills in the most common PC tasks. Also those in need of a refresher can dip into selected sessions. The second block includes sessions which go a little deeper into some of the topics from the first block, as well as introducing some new topics.

The sessions will be based on Windows 10.

Sessions are held on Mondays in the Ivy Room at Cockfield Hall, from 2.30 to 4.30. The schedule is subject to change depending on demand.

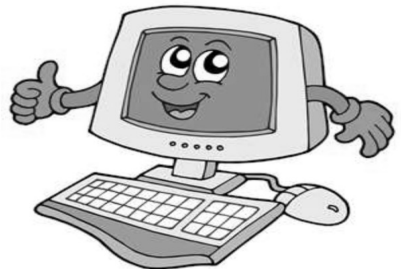
A donation is invited of £1 per person per session.

Participants should bring their own laptops and there are 8 desktops in the facility.

For further information and to sign up for specific sessions, please contact me at [neilka@btinternet.com](mailto:neilka@btinternet.com) or tel: 01284 827238 or 07900 880 888.

Full Programme information can be found at <https://onesuffolk.us12.list-manage.com/track/click?u=e423beabc64746b9c1b396007&id=0bfea4969a&e=5f8aec5229>

**Neil Ashton**



# St Peter's Christmas Tree Festival

At this year's Christmas fair on Sunday 3rd December come along and enjoy the first day of this magical festive feast in the beautiful surroundings of St Peter's Church, Felsham. The scent of Christmas trees decorated with sparkling lights, baubles and bows will put you in the festive mood and this wonderful Christmas Tree Festival will add extra fizz to this perfect time of year.

## **A magical experience to be shared by everyone!**

The Christmas Tree Festival is an open invitation for families, voluntary organisations and commercial enterprises to exhibit a tree, decorated with a theme of your choosing. Each tree will be clearly labelled with the name of the family, organisation or business and the theme of the tree. Help us once again to make this event a magical, colourful, imaginative and original display of trees of all shapes and sizes that will captivate the hearts and imagination of adults and children alike.

This festival provides an excellent opportunity for the whole village to participate, find out more about what's happening in the local community and the great variety of organisations, businesses, societies and interest groups that Felsham has to offer. It is also a chance to show support for our parish church and visit this historic and much loved landmark.

If you would like to participate and for full details please contact Churchwarden David on 01449 737778

---

Ria Crosbie and Chris Bassett would like to say a big thank you to everyone who made our first Art and Craft Fair such a success- the stallholders, visitors and helpers, including the WI who made the tea and coffee. We raised just over £300, which means we were able to donate a £100 each to the village hall and both churches.

See you again next year.

# SPANISH



Can you order your  
"cerveza, vino y tapas?"



***I CAN TEACH YOU!***

Phone **Andrea**  
on **01449 736955**

**Friendly Experienced  
Teacher**

offers

**Individual**

**Maths Tuition**

**KS1 – GCSE**

and

**Literacy Tuition**

**KS1 – KS2**

Call **Colin Plummer**

**01449 736918**

for details and availability

Or email : [colinp52@btinternet.com](mailto:colinp52@btinternet.com)

## **CARGATE** engineering

### Septic Tank Emptying and Servicing

- Septic Tank and Cesspool Emptying • Tank and Drain Cleaning Service available • Reliable and Competitive • 24/7 Emergency Response
- Treatment Plant Service available • New Tanks installed
- Vehicles Covering East Anglia

Cargate Engineering Ltd.  
Felsham Road, Bradfield St George,  
Bury St Edmunds, Suffolk IP30 0AG

E-mail: [n.milsom@cargate-engineering.co.uk](mailto:n.milsom@cargate-engineering.co.uk)

[www.cargateengineering.co.uk](http://www.cargateengineering.co.uk)



**01284 386538** (Head office)

## PILATES CLASSES

### IN WOOLPIT

Do you suffer from back pain, have shoulder, neck, knee or hip issues? Are you feeling your age or just want to be more flexible and toned?

**Body Control Pilates Instructor**

Small classes, a maximum of 8 clients per class, remedial based exercises.

**Studio at The Woolpit Osteopaths**

For further information regarding Pilates and testimonials please look at [www.midsuffolppilates.com](http://www.midsuffolppilates.com)

Or call **Claire Day** on **07803 615 444**

# Valley Farm Piano and Cello Tuition



Experienced, qualified  
teacher/professional accompanist.



Teaching all ages: beginners to advanced.

Accompanist for concerts, exams, rehearsals.

Contact: Nicola Brazier. GRSM(Hons) ARCM LGSM

Tel: 01449 737458

Mob: 07531795064

Email: [nicobraz@hotmail.co.uk](mailto:nicobraz@hotmail.co.uk)



## Felsham & Gedding Village Hall

Available for hire

- Large Main Hall
- Separate room
- Fully Licensed Bar
- Fully equipped Kitchen
- Stage available by arrangement
- Ample car parking
- Reasonable rates

**For bookings call 01449 737778**

**WiFi** available – password on request



## Bradfield Woods November Events



Wild Tots every Monday 10.00am - 11.30am for families with under 5 year olds.  
£4.00 per child.

Go Wild! Every Thursday 4.00pm-5.30pm for 6 – 12 year olds.  
£4.00 per child.

Saturday 4th November – Adult course: Carve a plate and beaker 9.30am – 4.00pm  
£60.00 + £10.00 materials.

Saturday 11th November – Adult course: Fibrecraft tool making workshop (braiding wheels, drop spindles, crochet hooks, lucettes) 10.30am - 2.30pm  
£40.00 + £2.00 materials

Sunday 12th November – Adult course: Spatula making 10am - 12.30pm  
£25.00

Sunday 26th November – Adult course: Spoon carving 10am - 3.30pm  
£50.00



To book any of the events please go to  
[www.suffolkwildlifetrust.org](http://www.suffolkwildlifetrust.org)

## W.I. October Meeting 2017

The President speedily dealt with the business side and then we were introduced to our guest speaker, John Morris, a trustee of The Stour River Trust.

During the reign of Queen Anne, in 1705, an Act of Parliament was passed making the River Stower (Stour) navigable from Sudbury, Suffolk to Manningtree, Essex. This was one of the country's earliest statutory rights of navigation. Between 1705 and 1713, work was undertaken to enable passage for barges, boats, lighters and other vessels. A public right of navigation remains today and is administered by the Environment Agency

Scenes of the Stour busy with all kinds of boats have been immortalised and made famous by the renowned landscape painter John Constable (1776-1837).

### STOUR LIGHTERS



These barges (lighters) operated on the River Stour from 1705 until the early part of this century carrying cargo up and down the river including bricks, grain, flour, manure and coal. There was no towpath and farmers fenced their land right down to the river which meant that the horses pulling the lighters had to jump over the stiles and fences 100 times on the 28 miles! It was said they would easily have won the Grand National.

The horse was also trained to leap on and off the foredeck whenever the towpath changed from one bank to the other.

The River Stour Trust was set up on 12th September 1968 to protect and enhance the right of the public to navigate the river.

It was a fascinating insight into the work the Trust has undertaken (all volunteers) and members seemed tempted to experience a trip on one of their boats next year.

Next month, 14<sup>th</sup> November, Vickie Hease will be enlightening us (well some of us of the crafty kind) on Fabric Flowers as Corsages and Fascinators. You think that sounds exciting then please come along and join us at 7.30 pm F&G Village Hall.

Dear Friends,

Remember remember, the 5<sup>th</sup> of November! I've seen the trailer for the BBC's new drama about Guy Fawkes, the man who is most associated with the plot to kill James I and his government at the Houses of Parliament. Those who plotted against James I would today be known as terrorists. Sadly we have become all too familiar with extremists who use violence in order to realise their political aims. It has been difficult for many of us to confront the truth of this in our society – where we value freedom above many of the other rights that we have achieved.

So, what can we say about God in the midst of all the pain and suffering that terrorists have inflicted on many, particularly civilians? Well, we can say that God is in the midst of the suffering. I believe in a loving God who wants the best for his creation, and is always merciful. However, there is also the question of justice. Many who don't believe in God challenge Christians about this. Why is it that God does not intervene in these situations to avert the violence, or at least to punish those who carry out violent acts? This is the question that many outside (and inside) the church would like to have answered.

The fact of the matter is that there is not a satisfactory answer to this question, at least not in terms that most expect. Instead, as Christians we think about Jesus, who lived for others to the point of suffering and dying for them. He showed compassionate care to those who were suffering, through his healing ministry and teaching, and through his own suffering and death on the cross on our behalf.

Many who have suffered believe in the faithful living presence of God, and this has helped them through their tragic times. It is about trusting God for better or worse, in good times and in bad, just as in a marriage. They see beyond the suffering to the hope that in the end there will be justice, in whatever form that takes. At this time of Remembrance, I believe that God is always with us and those we have loved and lost.

Yours in Christ,

*Revd Sharon*

[revsharon@btinternet.com](mailto:revsharon@btinternet.com), 01284-828599 or 07825086063



## Cockfield Benefice Services – November 2017

Sunday 5 <sup>th</sup> November All Saints	9.30am Communion BCP	Gedding
	11am Communion	Cockfield
	3.30pm Recital by Yalda Davis, Cellist – all welcome!	Bradfield St Clare
Wednesday 8 <sup>th</sup> November	10.15 am Cockfield School Remembrance Assembly	Cockfield
Sunday 12 <sup>th</sup> November Remembrance	8am Communion BCP	Bradfield St Clare
	9.30am Benefice Family Service	Felsham
	10.45am Remembrance Service	Cockfield
	10.45am Remembrance Service	Felsham
Sunday 19 <sup>th</sup> November Second before Advent	9.30am Communion	Bradfield St George
	11am Communion	Cockfield
	6pm Six2seven – Richard Stainer talks about the Lebanon	Felsham
Saturday 25 <sup>th</sup> November	3-5p Messy Church	Felsham Village Hall
Sunday 26 <sup>th</sup> November Christ the King	9.30am Morning Prayer BCP	Gedding
	11am Communion	Bradfield St Clare
	4pm Evening Prayer	Bradfield St George

<b>Daily Prayer</b>				
Tuesday	Wednesday	Thursday	Friday	Saturday
9am Cockfield	5pm Felsham	5pm Bradfield St Clare	5pm Gedding	5pm Bradfield St George

*Please note these services may be subject to change – for up-to-date service times see the benefice website at [www.cockfieldbenefice.com](http://www.cockfieldbenefice.com)*



## **Remembrance Sunday at Felsham St Peter**

All are invited to our special services of remembrance on Sunday 12<sup>th</sup> November at Felsham Church. After our Family Service which starts at **9.30am**, we will be holding our annual Service of Remembrance starting at **10.45am**.

This year is a special year as it is the 100 anniversary of the Battle of Passchendaele which took place between July and November 2017. It is also special for Felsham Church, as the Felsham and Gedding branch of the Royal British Legion have kindly helped us to enhance the area of remembrance in the church.

We do hope that you will be able to attend the service to commemorate those who have lost their lives in conflict.



## St Peters Felsham

Invite you to  
**Six 2 Seven**  
(this is an informal service held at the back of the church)

19th November  
The theme this month is

FAITH RELATIONSHIPS IN THE LEBANON

Please come a few minutes before and enjoy a teatime chat before hearing about Richard Stainer's illuminating trip to the Lebanon



## YOU OFF TO COLLEGE OR UNIVERSITY? OR ARE YOU ALREADY THERE?

If you live in Felsham and the answer to either of these questions is yes then don't forget to apply for your Education Bursary from the Village Charity.

- Write a short letter to the charity telling us where you're going and what course you'll be doing.
- Send the letter to me - Tricia Wilson, 12 Meadow Close, Felsham
- Apply for the grant every year that you're on the course.

# Six Bells Inn Felsham

Newly refurbished Dog Friendly Pub

Welcome to our family run Pub and Restaurant. We have all the qualities you could hope for in an English Country Pub. With our rural location and extensive pub garden and car parking facilities. If you are out and about in your car or looking for a peaceful walk in the country, we have an ideal location.

Muddy Boots and dog friendly open 6 days a week and offering Home cooked food and a wide range of good quality wines, beers, and freshly ground coffees and teas.

We have Monday night specials, Steak night every Thursday with two steak meals and a bottle of wine for just £25, along with or fresh Fish Fridays. Lunch time specials, sandwiches, paninis or larger lunches and evening meals. We offer a one, two, or three course Sunday lunch starting at £9.95 with a selection of meats available and a Quorn roast for vegetarians.

Booking advisable!

## Autumn/Winter Opening

Mon	5pm – 11pm
Tue	Closed all day
Wed	12.00- 3pm 5pm -11pm
Thurs	12.00- 3pm 5pm -11pm
Fri	12pm- 3pm 5pm -11pm
Sat	12pm- 3pm 5pm -11pm
Sun	12 pm – 6pm



Tel 01449 736268

# An Invitation from Woolpit Complementary...

**Saturday 11 November 2017**

## **Pre-Christmas Shopping Event - Silver Sherpa, Botanicals and Tea plus Treatments**

Following the success of our February event, showcasing the beautiful jewellery of Silver Sherpa, we've arranged a special pre-christmas shopping event.

We will have stalls from:

- Silver Sherpa - handmade sterling silver jewellery from Nepal.
- Botanicals - natural and organic skincare company based in the UK.
- Colne Valley Tea Company - Delicious teas and herbal infusions, including some wintery blends to keep us warm this Christmas.

You can also book yourself in for a relaxing express treatment, to ease any pre-Christmas jitters away.

We will be slightly 'Christmassy', offering alcohol-free mulled wine and festive home-baked treats but we promise: there will be NO Christmas music or decorations in November!

**Event information can be found on our Facebook page:**  
<https://www.facebook.com/pg/WoolpitComplementary/events/>

**Additional information about Woolpit Complementary can be found on our website:** [www.woolpit-complementary.co.uk](http://www.woolpit-complementary.co.uk)



Woolpit  
Complementary

*Because your health matters*

# Burglaries & Thefts:

## Vehicle of Interest YX61 REU

Your attention is drawn to the following police message:



The above vehicle has been seen in suspicious circumstances on farms across Suffolk and may be linked to an ongoing series of burglary and thefts. The vehicle activity has already reported to the police.

It is requested that no attempt is made to approach or stop the vehicle but to notify the police on 999 if a crime is suspected of being committed or 101 if a sighting or if you have any information.

**Sat 2 Dec 7.30pm**  
In the Main Hall at  
Beyton Campus

# LET'S DO IT! CONCERT

in support of Dive-Aid, working to  
restore the Swimming Pool in Beyton

Given by

**Octave**

East Anglia's foremost  
Vocal Ensemble

Including

Lots of favourite carols,  
as well as some for  
you to join in

# LET'S DO IT! AGAIN

Come and have a swimmingly-good time!

**TICKETS: £10**  
(school age children free)

Available from: Cathy Cass 01359 270785 or [cathycass@uwclub.net](mailto:cathycass@uwclub.net)



*Beauty  
by  
Megan*

Megan is a mobile Beauty Therapist with over 13 years experience in the Beauty Industry. Offering professional and thorough treatments in the comfort & convenience of your home. Alternatively I welcome appointments at my log cabin in Hitcham. My log cabin is in a peaceful, rural location and benefits from off-road parking!

**A variety of treatments include:**

Dermalogica facials/Spray tanning/Waxing/Eye treatments/Jessica manicures & pedicures/Jessica Gel Nails/Foot health maintenance (nail trimming & hard skin removal)

LVL Eyelash perming/Reflexology

Covering the heart of beautiful Suffolk.

Please phone for any enquiries or for a full price list.

**Megan Pryke** VTCT, BABTAC

**07876 717 008**



## Can you help Healthwatch Suffolk to shape and improve home care services

Healthwatch Suffolk is exploring people's experiences of accessing home care services (domiciliary care). It is an opportunity for you, your friends or family members to influence and improve these services now and for the future.

The watchdog wants to hear from people that are currently using home care services, have used them in the past or those who may need help at home but have been unable to obtain support in the county.

Domiciliary care is care provided in a person's home. Sometimes it is called home care or 'Support to Live at Home'. Home care can include support with things like helping people to get out of bed, washing, dressing, getting to work, cooking meals, eating, seeing friends, caring for families and being part of the community.

Healthwatch Suffolk will use your feedback to help it understand the issues that people face when accessing care at home and what needs to be explored in detail as part of its developing project. As the health and care watchdog for Suffolk, it can use the things that people share to shape, influence and improve care to our county's most vulnerable residents.

### Sharing your experiences couldn't be easier

If you are currently using a service, Healthwatch Suffolk is asking people to take part in a short survey. You can access it using the following link:  
<https://www.surveymonkey.co.uk/r/homecareinsuffolk>

If you are not currently accessing support or would prefer not to feedback online, please contact the Healthwatch Suffolk team on 08004488234 (Freephone) or by email to [info@healthwatchesuffolk.co.uk](mailto:info@healthwatchesuffolk.co.uk). Hard copies of the survey and other formats are available on request.



**Do you receive care in your home?  
You can help us to improve local services.**

# Nicholson Executive Travel

Professional Chauffeur Service

- \* Airports and Seaports
- \* Business Travel
- \* Any UK Destination
- \* Accounts Welcomed

Tel: 01359 232648  
07850 370465

Email: [roger.nicholson1@tesco.net](mailto:roger.nicholson1@tesco.net)

## HANDS UP! NAIL STUDIO IN RATTLESDEN

CLASSIC MANICURE - £12  
CLASSIC PEDICURE - £22

ANY QUESTIONS PLEASE CALL:

07889448186

[HANDSUPMANICURE@GMAIL.COM](mailto:HANDSUPMANICURE@GMAIL.COM)  
[INSTAGRAM.COM/HANDSUPMANICURE](https://www.instagram.com/handsupmanicure)

**CERTIFIED NAIL MASTER  
WITH DIPLOMA**

## Apple Tree Cottage

Lower Green  
Felsham



**Buy High Welfare Meat Locally!**  
**All raised in Felsham & Gedding**

**New season's beef now in!**  
**Goat & Kid**

**Lamb Hogget Mutton  
Pork Gammon Bacon**

**Tel: 01449 737793** (leave a  
message if we are not in and we  
WILL get back to you)

## PROFESSIONAL FOOT HEALTHCARE

IN THE COMFORT OF YOUR OWN HOME

FRIENDLY AND PROFESSIONAL  
TREATMENT AND ADVICE

**TEL. 07842 400302**

Email: [tishfayers@hotmail.co.uk](mailto:tishfayers@hotmail.co.uk)

Patricia Fayers S.A.C.Dip. RFHP



## **201017 serious collision on A14 Orwell Bridge**

Police were called at 6.45am Friday 20 October, to reports of a collision on the eastbound carriageway of the A14 between junction 56, Wherstead and 57, Nacton (the Orwell Bridge).

A Nissan Cabstar van had stopped on the carriageway and the driver was out of the vehicle when both he and the van were struck by a large agricultural vehicle. Sadly, the man has died at the scene as a result of injuries sustained in the collision.

An investigation into the full circumstances of the incident is now underway. Police are asking any witnesses, or any drivers who may have relevant dash-cam footage to contact the Serious Collision Investigation Team on 101, quoting CAD 46.

## **Appeal following fail-to-stop collision near Hintlesham**

Police are appealing for information or witnesses following a fail-to-stop road traffic collision near Hintlesham.

The incident occurred on the A1071 as the road becomes Thorpe's Hill, near to the junction with Pigeon's Lane, at approximately 6pm on Wednesday 18 October.

A black Mitsubishi Outlander car was travelling towards Ipswich when it was involved in a collision with an oncoming vehicle. The driver of the Mitsubishi Outlander sustained minor injuries but did not require medical treatment.

The second vehicle failed to stop and is believed to have sustained damage along the offside (driver's side).

Anyone who witnessed the collision, has dash cam footage of the incident, or who has information regarding a car with damage to its offside panels is urged to contact Suffolk Police on 101 quoting CAD 166 of 18 October.

# 12<sup>TH</sup> NIGHT CELEBRATION

(Ticket only)

YOU ARE WELCOME TO A NIGHT OF  
ENTERTAINMENT

TO BE HELD IN THE VILLAGE HALL

ON

**SATURDAY 6<sup>TH</sup> JANUARY 2018**

WITH

**HOT SUPPER - 3 CHOICES**

PLUS

**THE HOUSE BAND AND LOCAL "ARTISTS" SUPPLYING AN  
EVENING OF FUN**

**BAR OPENS 7PM**

**ENTERTAINMENT COMMENCES 7.30PM**

Tickets are FREE and ALLOCATED on a First Come, First Served basis as  
NUMBERS are LIMITED

To reserve yours contact: BRIAN. 01449 736219

DAVID. 01449 737483




---

## Petticoat Decor

Quality Experienced Painting & Decorating Services  
Stowmarket Bury St Edmunds Ipswich &  
Surrounding Areas  
Interior & Exterior Painting, Wallpapering,  
Signwriting & Decorative Effects

Charlene Chinnery-Wilson  
07469212035  
Charlene.petticoatdecor@gmail.com

---



# Just for Kids

## Rudolph Cupcakes

*These Rudolph cupcakes are a chocolate cupcake variation with a lovely Christmas twist! The kids will enjoy helping you to decorate them and they will certainly enjoy helping you to eat them. They look good enough to serve at a Christmas party, too.*

### Ingredients:

makes 24 (can easily be halved)

225g margarine  
200g caster sugar  
50g cocoa powder  
200g self raising flour  
4 eggs  
3-4 tablespoons of milk  
200g milk choc chips  
200g plain choc chips  
100g unsalted butter  
150g icing sugar  
Red glace cherries



### Method:

Preheat the oven to 180C/gas mark 4.

Cream together the butter and sugar. Add the eggs one at a time.

Sift the flour and cocoa powder into the bowl and fold into the wet mix. Add a little milk if needed.

Line 2 bun tins with cupcake cases and fill each with a spoonful of cake mix.

Bake for 10-12 minutes.

Put aside 48 plain chocolate chips for decorating the cupcakes.

Melt half of the remainder of the plain chocolate in a microwave. Drizzle onto greaseproof paper into antler shapes. Repeat with the rest of the plain chocolate.

Due to the need to work quickly it is best to make the icing in two parts. Melt 100g milk chocolate and 50g of unsalted butter in the microwave. Stir in 75g icing sugar. Cover 12 of the cakes.

Carefully peel off 24 'antlers' from the greaseproof paper and stick 2 to each cake. Add two choc chips as eyes and a cherry as a nose to each cake.

Repeat to decorate the remaining dozen cakes.

# Dennis Green



An independent local company providing exceptional service in Stowmarket and surrounding areas

A wide range of carpets, vinyls, tiles, laminate and wood flooring



For personal service and all year competitive pricing, give Dennis a call

**Tel: 01449 774770**

**Mobile: 07879 485215**

**n i c f**

national institute of carpet & floorlayers

*"We will bring our shop to you"*

Tailored quotes to suit your needs

Unit 6B, The Barn, Glebe Farm,  
Onehouse, Stowmarket, IP14 3HL  
[www.dennisgreenflooring.co.uk](http://www.dennisgreenflooring.co.uk)

## DS Plumbing Services

**Local plumbing services, all plumbing work considered from leaky taps to full bathroom installations.**

- **Free estimates,**
- **Emergency work undertaken,**
- **No call out charge**
- **Drains cleared**
- **Bathroom design and installation**
- **Supply and fit or fit only**

**Call now on 01359 270583 OR  
07830 020287**

## Allotment Holders and Gardeners

Would you like to buy your seeds at a 50% discount?  
plus

15% off everything else in the Dobies Seed Catalogue 2018

Seeds are supplied by Dobies ([www.dobies.co.uk](http://www.dobies.co.uk))

You place your order with them, quote a special discount code, pay the balance and they deliver straight to you.

If you are interested please contact Jo Tavernor on 01449 737793



**Dobies**  
[www.dobies.co.uk](http://www.dobies.co.uk)

## **Mobile Sales & Services**

**PURPLE PEOPLE EATER CURRY VAN** Wednesdays @ 5 - 8pm - Village Hall Car Park

**FRESH FISH** Fridays @ 10.05am (weather permitting) - Village Hall Car Park

**LIBRARY** Friday 2<sup>3rd</sup> November @ 10.10am Gedding Village Sign & 11.40am VH Car Park for roughly half an hour

**JOHN'S FRESH FRUIT & VEG** Mondays & Thursdays Contact John Talbot on 01449 736578 for a personal service

## **Bin Emptying**

**Wednesday 1<sup>st</sup> November** - Recycling bin

**Thursday 2<sup>nd</sup> November** - Brown bin

**Wednesday 8<sup>th</sup> November** - Black bin

**Wednesday 15<sup>th</sup> November** - Recycling bin

**Thursday 16<sup>th</sup> November** - Brown bin

**Wednesday 22<sup>nd</sup> November** - Black bin

**Wednesday 29<sup>th</sup> November** - Recycling bin

**Thursday 30<sup>th</sup> November** - Brown bin

## **Bus Times**

### **Buses to and from Bury St Edmunds - Monday to Saturday**

No 377 Depart Bury Road, Felsham at 07.14

No 377 Depart Gedding Bus Stop at 07.17

No 377 Return from Bury Bus Station at 17.50

No 386 Depart Church Road, Felsham at 10.14 & 12.44

No 386 Depart Gedding Bus Stop at 10.17 & 12.47

No 386 Return from Bury Bus Station at 11.10 and 14.10

### **Buses to and from Bury St Edmunds - Wednesdays only**

No 379 Depart Felsham Six Bells at 10.34

No 379 Depart Gedding Bus Stop at 10.36

No 379 Return from Bury Bus Station at 13.00

### **Buses to and from Stowmarket - Monday to Saturday**

No 386 Depart Gedding Bus Stop at 09.19, 11.49 & 14.49

No 386 Depart Church Road, Felsham at 09.22, 11.52 & 14.52

No 386 Return from Stowmarket, Bury Street at 9.50 and 12.20

### **Buses to Woolpit - Fridays only**

No 472 Woolpit Circular - (Health Centre Bus) Depart at 10.20

No 472 Return from The Street, Woolpit at 12.30

<b>ALLOTMENTS</b>	HARRY WRAGGE	01449 736611
<b>CARPET BOWLS</b>	TREVOR DORES	737936
<b>CHURCHES: ST PETER'S, FELSHAM ST MARY'S, GEDDING</b>	REVEREND SHARON POTTER Email: revsharon@btinternet.com	01284 828599
<b>CHURCH WARDENS</b>	FELSHAM: DAVID WILLIAMS GEDDING: JAMES MORGAN	01449 737778 01449 737445
<b>DOCTORS SURGERY PHARMACY</b>	HEATH ROAD, WOOLPIT	01359 240298 01359 242394
<b>F&amp;G FUEL GROUP</b>	pawilson4@btinternet.com	01449 736330
<b>FAGENDS</b>	C/o DAVID WILLIAMS	01449 737778
<b>FELSHAM CHARITY</b>	DAVID WILLIAMS	01449 737778
<b>GEDDING PARISH MEETING</b>	GILLY MORGAN	01449 737445
<b>MEMBER OF PARLIAMENT</b>	JO CHURCHILL, 10 HATTER STREET, BSE IP33 1LZ	01284 752311
<b>MID SUFFOLK AND COUNTY COUNCILLOR</b>	PENNY OTTON Email: penny.otton@suffolk.gov.uk or penny.otton@midsuffolk.gov.uk	01449 736482
<b>MID SUFFOLK DC</b>	NEEDHAM MARKET	0845 606 6170
<b>FELSHAM PARISH COUNCIL</b>	CHAIR: SIMON GARROD CLERK PAULA GLADWELL, Green Farm Barn, Cockfield Email: felshamparishclerk@gmail.com	01449 737728 01284 828112
<b>PLAYING FIELD</b>	CHAIR: ADRIAN KING	01449 737495
<b>SHELTERED HOUSING</b>	MID SUFFOLK D.C.	01473 826639
<b>SNT POLICE OFFICER</b>	PC 421 ANNELLY MILES Email: Annelly.miles@suffolk.pnn.police.uk Ryan.Brunning@suffolk.pnn.uk	101 999 emergency
<b>TREE WARDEN</b>	MARK TAVERNOR Email: mtavernor@btinternet.com	01449 737793
<b>VILLAGE E.VINE</b>	Email: faddb1011@btinternet.com	
<b>VILLAGE HALL</b>	CHAIR & BOOKINGS: DAVID WILLIAMS	01449 737778
<b>VILLAGE WEBSITES</b>	Felsham: felsham.onesuffolk.net/ Gedding: gedding.onesuffolk.net/ Felsham & Gedding Community Group: <a href="https://www.facebook.com/groups/1499511503671659/">https://www.facebook.com/groups/1499511503671659/</a>	
<b>WHIST DRIVE</b>	PAT CLARKE	01449 736202
<b>W.I.</b>	ALISON SHAW	01284 827034
<b>YOGA</b>	PAT CLARKE	01449 736202

#### Newsletter general policy

We **do** publish acknowledgements, articles of general interest, artistic works and similar.

We **do** publish factual material from recognised organisations.

We do publish to the Village web site at <http://felsham.onesuffolk.net/>

We do **not** publish defamatory, rude, blasphemous, racial or other inappropriate material.

We reserve the right to edit contributions to suit publication needs.

We are reliant on contributions from many sources, taken in good faith, and cannot be held responsible for any errors or omissions.

Copyright waiver is presumed implicit on all submissions unless clearly stated otherwise.