

FELSHAM + GEDDING

march 2023

VILLAGENEWS



ISSUE 229



to the March edition of your Felsham and Gedding Village News.

We have broken the back of winter, the daffodils are starting to flower. The crocii are looking fabulous in the sunshine and don't forget home grown seasonal vegetables are better for you and the environment than 'exotic' salad and vegetables.

March of course brings blossom and bulbs to the fore with animals coming out of hibernation so please. Look out for the hedgehogs, dormice and harvest mice that will all be looking for a new beginning.

Smile with the spring sun and enjoy the enormity of spring to come.

Thank you to everybody involved with all of the village events that have happened in the last month. You are crucial to the community of Felsham and Gedding - you know who you are!

Libby 😊

from the editor

Next Copy Date: 20/03/2023

Please be aware that items submitted after the deadline cannot be guaranteed to appear in the magazine.

Copy Submissions

Email: fgvillagenews@gmail.com or call Jo Tavernor on 01449 737793

Advertising

Email: fgvillagenewsadverts@gmail.com or call Jo Tavernor on 01449 737793

Compliments, Complaints and Suggestions

The Village News welcomes your feedback. Do you have any comments about what we do, what's going well, anything you'd like us to change?

Newsletter General Policy

We do publish acknowledgements, articles of general interest, artistic works and similar.

We do publish factual material from recognised organisations.

We do publish to the Village Website at <http://felsham.onesuffolk.net>

We do not publish defamatory, rude, blasphemous, racial or other inappropriate material.

We reserve the right to edit contributions to suit publication needs.

We are reliant on contributions from many sources, taken in good faith, and cannot be held responsible for any errors or omissions.

Copyright waiver is presumed implicit on all submissions unless clearly stated otherwise.

FELSHAM & GEDDING PLAYINGFIELD COMMITTEE

(The Walmsley Jubilee Field)

Registered Charity 272431

Annual General Meeting

Monday 27th March 2023

7.30pm Felsham and Gedding Village Hall

We look forward to seeing you.

If you use the Playing Field please seriously consider joining the committee.
It's informal and fun and as a committee member you will help to set and run the programme of events and improvements for the coming year.



VILLAGE FRIENDS

The next meeting will be on Thursday March 16th at 2pm
at Felsham and Gedding Village Hall

Easter Activity

Village Friends is an over 65's friendship group of men and women from various villages who meet once a month and enjoy tea together.

All welcome, just come along

If you require transport, please contact:

Sue Jell 01284 828892

Or Lynn Cardale 01284 386327

1 March - St. David's Day

Did you know?

St David is associated with several miracles?

While preaching to a crowd, where some were unable to see him, the ground beneath his feet rose to create a hill. At that moment as he levitated, a white dove landed on his shoulder, which became the saint's emblem

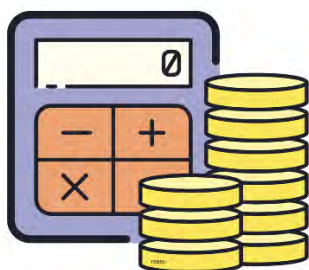


St. David's emblem is a white dove and a leek.

There are 50 churches in Wales named after St. David.

St. David was a vegetarian – he followed a very strict diet of eating only bread, herbs and vegetables.

Treasurer Needed!



Felsham and Gedding Playing Field

is run by a small group of volunteers, much needed to continue to run the playing field as a key facility for our community.

We are in need of a treasurer – can you help?

If you would like to find out more or have any questions please contact Jo Tavernor on 01449 737793 or email isthorticulture@btinternet.com

Deliverer Needed!

Do you enjoy reading the Village News?

Do you live in Gedding?

Do you enjoy getting out and about?

We are looking for someone who can deliver the Village News in Gedding.

Please contact Jo Tavernor on 01449 737793 or email fgvillagenews@gmail.com



17 March – St. Patrick's Day

Did you know?

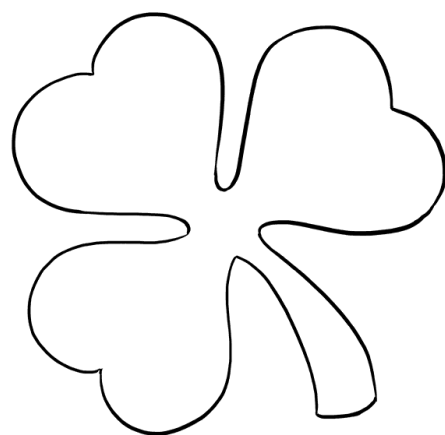
He was actually born in Britain

St. Patrick's Day parades began in America – not Ireland!

Parades date back to the late 18th century in USA after the Famine, St. Patrick became a source of pride and a way for the growing Irish diaspora to reconnect with Irish heritage.

He was traditionally associated with the colour blue

Blue actually remains Ireland's official heraldic colour and the association with green came as a form of rebellion as discontent with English rule grew, it was seen as a sign of rebellion to wear green shamrock rather than the blue.



Rothwell's Carpet Cleaning

01638 428 060
www.Rothwells.biz

Carpet Cleaning

Stone Floor, Upholstery & Rug Cleaning.

A few points that make us stand out from the others,

Rothwell's has been in business since 1993.

We're an honest local family firm.

Our large truck mounted machines mean more cleaning
& drying power for the best results possible.

Members of both the NCCA and TACCA.

We will move the furniture for a thorough clean.

100% satisfaction or it's FREE.

Call Oliver and Max Campbell for expert help today.

Rothwell's, Malting End, Kirtling, Newmarket, CB8 9HH



Licensed cloud based Bookkeeping & Accounting Practice

Genie services include:

Financial & Management Accounting
External Accounts department
Business set up & training
Regular Bookkeeping & Payroll services
CIS Returns
VAT Returns
Taxation services

Contact us

+44 1284 728399
thelamp@a-counting-genie.co.uk
www.a-counting-genie.co.uk

Phina (Director)
07309600007

Daniela (Accounting Genie)
07463712832



@a_counting_genie_ltd



@a.counting.genie.ltd

St Peter's Church Felsham



Spring Cleaning

Saturday 18th March 2.00pm – 4.00pm

It's that time of year and our Church needs a good clean/tidy both inside and out.

Hedges and bushes need trimming and inside needs a good sorting out. Own tools & equipment essential.

All help will be greatly appreciated, and tea/coffee and cake will be served at the end.

Please do come along and join the working party

A great way to meet people in the village

Thank you in anticipation

Felsham PCC

&

Easter Saturday

8th April 2.00pm – 4.00pm

Please accept this Invitation to bring flowers to the church to celebrate Easter.

These will be the first flowers in our church following Lent which began on February 22nd.

So do come along, bring a few flowers, meet friends old and new.

Tea/Coffee/Juice and cake will be available.

Thankyou on behalf of Felsham PCC



ALL SORTS OF SIGNS & GRAPHICS FOR ALL SORTS OF BUSINESSES

Hollybush Farm Rattlesden IP30 0SU

01449 736619 • 07751 084850 • info@randagraphics.co.uk • www.randagraphics.co.uk

Vinyl Graphics
for Walls,
Floors &
Windows

Canvases,
Hemmed
Banners
& Vinyl
Labels

Rigid
Signs on
All Sorts of
Material

R&A
graphics

Wallpaper,
Posters,
Backlit Films
& POS

Roll-Up
& Pop-Up
Display
Systems

Decals for
Vehicles,
Plant &
Machinery

A N GILLAM

Building,
All aspects of roofing,
chimney work,
Lime plastering & rendering.
Chimney sweep

*Free quotes,
No job too small,*

The Mouse House,
Bradfield St Clare,
Bury St Edmunds,
Suffolk
IP30 0EL

Tel 01284 388508
Mob 07961 878564

CHIMNEY SWEEP

ECO SWEEP CHIMNEY SERVICES

- NEW POWER SWEEPING METHOD USED FOR A MORE THOROUGH CHIMNEY CLEAN THAN BRUSHES.
- INDUSTRIAL HEPA FILTERED VACUUM.
- FULLY INSURED.
- INSURANCE RECOGNIZED CERTIFICATES ISSUED.
- SPOTLESS, RELIABLE AND FRIENDLY SERVICE.
- ALL CHIMNEYS, WOOD BURNERS, AGA, BOILER, FLUES SWEEP.
- GUILD OF MASTER SWEETS CERTIFICATED MEMBER.



TEL. 01359 232335

**FELSHAM & GEDDING VILLAGE HALL SOCIAL CLUB
FILM NIGHT**

Saturday 17th March

AT 7.30 PM

WITHNAIL AND I

**UK 1987
RATED 15**

Interval raffle – ices - tea & coffee

Enquiries re membership of the social club to Brian on 736219 or on the evening.

Grow vegetables for wildlife

**wildlife
watch**



Lots of gardeners like to grow plants that attract wildlife into their garden. Lots more find that their fruit and vegetables are nibbled before they can pick them. So here's a radical idea: why not try planting fruit and vegetables – for wildlife!



large white
and small white
butterflies



cabbage



broccoli



cauliflower



slugs and
snails



lettuce



blackbirds



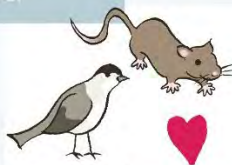
strawberries



thrushes



apples and pears



small birds
and mice



blackberries
and raspberries



hoverflies and
other insects



carrot flowers



fennel flowers

www.wildlifewatch.org.uk

Illustration: Corinne Welch © Copyright Royal Society of Wildlife Trusts 2015

PROFESSIONAL FOOT HEALTHCARE
IN THE COMFORT OF YOUR OWN HOME

**FRIENDLY AND PROFESSIONAL
TREATMENT AND ADVICE**

TEL. 07842 400302

Email: tishfayers@hotmail.co.uk

Patricia Fayers S.A.C.Dip. RFHP

Apple Tree Cottage



**Locally Produced
Naturally Reared
Rare Breed**

Lamb-Hogget-Mutton

**Available from the Village Shop
and at
Apple Tree Cottage
Lower Green, Felsham**

Mark Crawford Electrical Contractor



Mark Crawford

Domestic and Commercial Electrician

Telephone: 01449 736043 / 07811 897878

MEC **Electrical**



Suffolk
Wildlife Trust



Bradfield Woods March Events



Saturday 4 March - Green woodworking skills - using your axe

Learn to use your axe effectively with Will Wall. 10am – 4pm

Tuesday 14, 15, 28, 19 March - Forest School Assistant Level 2 course

A 4 day course certified by AIM Qualifications and Assessment Group for people who wish to assist with the delivery of a Forest School programme. 9.30am – 4.30pm

Sunday 26 March - Kuksa bowl carving

Spend a day with local craftsman Nick Gosman in this wonderful ancient woodland learning how to carve a Kuksa bowl. 10am – 4.30pm

Sat 1 April - Basket weaving

Join Coddwomplers Stuart and Emma, experienced basket makers and willow workers, to make a 'wild basket'. 10am – 4pm

Booking essential for all courses see suffolkwildlifetrust.org

We can all help create a Wilder Suffolk, join us at: suffolkwildlifetrust.org/join

You can follow Suffolk Wildlife Trust on [Facebook](#), [Twitter](#) and [Instagram](#)

<i>MONDAY</i>	<i>TUESDAY</i>	<i>WEDNESDAY</i>	<i>THURS</i>
		1 TABLE TENNIS VH 7.30PM	MERMAID FISH VHCP 5.50 -
6 F&G & FRIENDS GROUP VH 2.30PM	7	8 CARPET BOWLS VH 7.30PM	MERMAID FISH VHCP 5.50 -
13	14	15 TABLE TENNIS VH 7.30PM	VILLAGE FRIENDS VH 2PM MERMAID FISH VHCP -5.30
20	21 Parish Council, VH 7.30pm	22 CARPET BOWLS VH 7.30PM	MERMAID FISH VHCP 5.50 -
27	28	29	

VH - Village Hall VHCP -Village Hall Car Park

DAY	FRIDAY	SATURDAY	SUNDAY
2 FRESH FISH VHCP 10.05 AM & CHIPS 6.30PM BROWN BIN	3 FRESH FISH VHCP 10.05 AM RECYCLING BIN	4	5
9 FRESH FISH VHCP 10.05 AM & CHIPS 6.30PM	10 FRESH FISH VHCP 10.05 AM LIBRARY VAN GEDDING 10.10 AM & VHCP 11.40 AM BLACK BIN	11	12
16 FRESH FISH VHCP 10.05 AM & CHIPS 6.30PM BROWN BIN	17 FRESH FISH VHCP 10.05 AM RECYCLING BIN	18 FILM NIGHT VH 7.30PM	19
23 FRESH FISH VHCP 10.05 AM & CHIPS 6.30PM	24 FRESH FISH VHCP 10.05 AM BLACK BIN	25	26
30	31		

Cockfield Benefice Services & Events – March 2023

Saturday 4 March	2-4pm 'Vintage Messy' at Bradfield St Clare Village Hall.
Sunday 5 March Lent 2	9.30am Communion CW - Stanningfield 11am Morning Prayer CW - Cockfield 11am Communion CW - Bradfield St Clare 6pm Six-to-Seven - Felsham Village Hall
Sunday 12 March Lent 3	9.30am Said Communion BCP – Cockfield 11am Communion CW – Bradfield St George 4pm Praise and Worship – Gt Whelnetham
Sunday 19 March Lent 4/Mothering Sunday	9.30am Morning Prayer CW – Stanningfield 10am Family@Church – Felsham 11am Communion CW – Cockfield 4pm Taizé Service – Bradfield St Clare
 Saturday 25 March	Crafts - Food - Stories All children welcome with carer/parent. 3-5pm. Venue tbc. Contact Canon Sharon for more details.
Sunday 26 March Lent 5/Passion Sunday	9.30am Communion CW – Gt Whelnetham 10am Worshipping Together – Bradfield St George 10am Communion BCP - Gedding

Please note these services may be subject to change – for up-to-date service times see the benefice website at www.cockfieldbenefice.com

A service of Celtic Morning Prayer is held every Tuesday at Cockfield at 9am & every Thursday at Stanningfield at 9am.

A prayer group meets via zoom every Wednesday at 2pm via zoom

For more details contact Canon Sharon at revsharon2@gmail.com

tel: 01284 828599 or 078250 086063

Take a look at our facebook page!

Dear Friends,

I know that it feels a bit early to be talking about Spring but I have seen spring shoots coming up all around the garden, and at times it does feel as though Spring is well and truly on the way. I have also seen plenty of snowdrops on the paths that I have been running just lately.

We can all marvel at the way in which the earth recovers from winter and I'm sure many of us are looking forward to warmer times when we can turn our heating down or off. This will be a welcome relief for those who have really struggled with their energy costs over the winter.

I think that many of us are struggling in all sorts of ways with life at the moment, not least with the news that reaches us about the Ukraine war and the earthquakes that have devastated parts of Turkey and Syria. Seeing and hearing about such misery and pain can overwhelm us, and we cry out to our God to help those who are in the midst of these crises.

As we move through Lent, my prayer is that we can give thanks for the many blessings that we have here in this lovely part of Suffolk. The communities that we have are, on the whole, so kind and generous. We are very lucky, and I thank God every day that I am so privileged to be here. And we continue our prayers for those who are experiencing pain or suffering, that they may experience the love of God in their lives too.

Yours in Christ,

Sharon

Rev Canon Sharon Potter

revsharon2@gmail.com 01284-828599 or 0782508



Taylor's Solid Fuels LTD

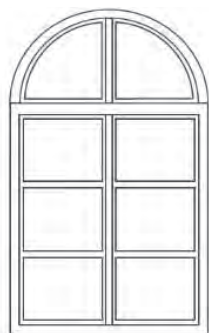
Family run since 1946

**Regular fortnightly Solid Fuel deliveries in your area.
Competitive prices and a full range of products.**

"Don't Shiver We Deliver"

Quality top soils and aggregates. Bulk bags and Tipper loads from 1-20 tonnes

Tel: 01842890568 or see us on www.taylorssolidfuels.co.uk



MILES ROLFE JOINERY

**Production, Design & Fitting of All
Aspects of Joinery & Furniture**

Gt. Finborough • Suffolk

**07880 776845 mobile
mrjoinery@live.com**

**01449 771338 evening
milesrolfejoinery.co.uk**



Follow me on Facebook

Many of your neighbours in Felsham are already working hard to help everyone in the community flourish: perhaps organizing events in the Village Hall; helping with the Playing Field; as one of the Village Friends – or getting the *Felsham & Gedding Village News* published!

We have all had a difficult time in the last three years and are now facing some new difficulties and challenges: a good way to approach them is by asking ourselves “Is there anything that I can do to help?”

Well, one way you too can help is by standing for election to **FELSHAM PARISH COUNCIL** during the local elections in May...

What is a Parish Council?

A parish council is the local authority closest to the community, with the district council above it in the hierarchy. The Parish council is invariably the first place people will go with concerns and ideas or for support and guidance, so it is a vital part of any community.

Its work falls into three main categories:

- representing the local community, including deciding how to allocate a portion of the Council Tax
- helping to deliver services to meet local needs
- striving to improve quality of life in the parish

Parish councils make all kinds of decisions on issues that affect the local community:

- Planning matters (they are what is known as ‘statutory consultees’)
- helping local groups
- managing open spaces
- crime prevention
- campaigning for and delivering better services and facilities

It’s true that on their own parish councils have limited powers to make decisions. But they can negotiate with and influence those other organisations that do make the final decisions, such as the District and County Councils. Your District & County Councillors attend nearly all Parish Council meetings. The organisations that make final decisions know that a parish council can best reflect how a community feels about something, and its views will be taken seriously.

How much time does it take up?

The Council usually meets every month (except August) for the council meeting, which usually lasts an hour or so. Also, councillors sometimes attend other meetings, for example as a representative on an outside body; with community activities; or helping develop a new local project. Such meetings don’t happen every day, so it won’t take over your life.

How long does a parish councillor serve for?

Once elected, parish councillors sit on the council for a maximum of four years. If they then want to stay in the post they can stand for re-election.

For more information:

Just turn up at the next Parish Council Meeting (see website for details) or contact the Parish Clerk at felshamparishclerk@gmail.com ; check out the Parish website <http://felsham.onesuffolk.net/> or speak to a Parish Councillor you already know

SPANISH



Can you order your
"cerveza, vino y tapas?"



I CAN TEACH YOU!

Phone **Andrea**
on **01449 736955**

Allison Saunders Hairdressing

Prices

✂	Men's haircut	£12
✂	Ladies Dry-cut	£17
✂	Blow-dry	£19
✂	Cut and Blow-dry	£25
✂	Shampoo and Set	£17
✂	Cut Shampoo and Set	£25
✂	Perms <i>(Including cut and dry)</i>	From £50
✂	Colours <i>(Including cut and dry)</i>	From £50
✂	Cap Highlights <i>(Including cut and dry)</i>	£55
✂	Easymech/Foils <i>(Including cut and dry)</i>	From £65

Availability for you and your family

Please call **07752382590**

Valley Farm Piano and Cello Tuition



**Experienced, qualified
teacher/professional accompanist.**

Teaching all ages: beginners to advanced.



Accompanist for concerts, exams, rehearsals.

Contact: Nicola Brazier.GRSM(Hons) ARCM LGSM
Tel: 01449 737458
Mob: 07531795064
Email: nicobraz@hotmail.co.uk

Stowmarket Chorale presents...

“Mozart 1791”

on Saturday 18th March 2023 7.30 p.m. at the John Peel Centre for Creative Arts, Church Walk, Stowmarket, IP14 1ET

Stowmarket's resident choir brings a performance of Mozart's final mesmerising masterpiece, his Requiem, to the John Peel Centre, featuring soloists of the Royal Opera House Extra Chorus Covent Garden. The choir will also sing the Ave Verum and the concert programme will include the opera arias:

- ‘Per questa bella mano’ - for bass & double bass obbligato
- ‘Torna di Tito a lato’ - for mezzo soprano from La Clemenza di Tito
- The Duet - ‘Bei Männern, welche Liebe fühlen’ - for soprano & baritone from The Magic Flute.

The soloists are:

Kathryn Jenkin (Soprano), Maria Brown (Mezzo Soprano), Phillip Conway-Brown (Tenor), Mark Saberton (Bass-Baritone) & double bassist Clare Larkman.

Both Mark and Clare have local connections; Mark being from Sudbury and Clare from Woodbridge.

Our conductor is Benedict Collins Rice and William Baldry will be playing Chamber Organ.

Mozart composed part of his Requiem mass in D minor in Vienna in late 1791 but it was unfinished at his death on 5 December that year at the age of only 35. His student Franz Xavier Süssmayr completed the piece in 1792.

Mozart imagines a very dramatic end of the world in the Dies Irae, the day of wrath - whilst Lacrimosa, the day full of tears, is very beautiful and sad. Mozart only wrote the first eight bars before he died. However, in composing the remaining parts Süssmayr may well have accessed Mozart's incomplete notes and have recalled previous discussions with the composer. Regardless of who wrote which parts of the Requiem it still sounds wonderful to most of us. As Beethoven said 'If Mozart did not write the music, then the man who wrote it was a Mozart.'

Tickets are £18. Please book online via www.johnpeelcentre.com or call Box Office on 01449 774678.

THE STABLE at Mullion Barn



Are your friends or relatives
coming to visit?

Do you need somewhere local
for them to stay?

The Stable at Mullion Barn is an established
private self-catering 1-bedroom holiday let
at our converted 17th century barn in Hesselton

Go to www.mullionbarn.com for more info

Contact Debbie for availability and prices via email
mullionbarn@gmail.com or call 07881 806823

FELSHAM AND GEDDING VILLAGE HALL

Available For Hire

Large Main Hall

Separate Room

Fully Licensed Bar Available

Fully Equipped Kitchen

Stage Available By Arrangement

Ample Car Parking

Reasonable Rates

For Bookings Call 07830 020287

Wifi Available – Password On Request

Keith Bedwell's Building Services

Traditional Lime & Hair Plastering

Plastering & Rendering

Floor & Wall Tiling

Renovation & Restoration Work

General Maintenance

Call: 01449 257806

Mobile: 07870 371520

Email: info@keithbedwell.co.uk

Facebook: Keith Bedwell Building Services

Website: www.keithbedwell.co.uk



Leek & greens lasagne



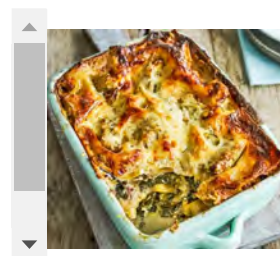
Prep: 35 mins
Cook: 1 hr



Easy



Serves 4



Ingredients

3 tbsp olive oil, plus extra for the tin

50g butter

1 bay leaf

rosemary sprig, leaves picked and roughly chopped

3 leeks, cleaned and rough green ends discarded, 1 finely sliced and 2 cut into medium slices

40g plain flour

500ml milk

fresh nutmeg, for grating

100g cheddar, grated

30g parmesan, grated

2 garlic cloves, crushed

½ green chilli, sliced

400g mixed green leaves, such as kale, chard and spinach, roughly chopped

100ml dry white wine

100g walnuts

280g jar preserved artichoke hearts in oil, drained

100g ricotta

6 dried lasagne sheets

Method

Step 1 Heat oven to 200C/180C fan/ gas 6. Heat 1 tbsp oil with the butter over a medium heat. Add the bay leaf, rosemary and finely sliced leek, season and cook for a few mins until the leek has softened.

Step 2 Add the flour and cook for 1 min more until the roux smells nutty. Take off the heat, slowly pour in the milk and whisk out any lumps.

Step 3 Return to the heat and whisk slowly until thick and smooth, about 5 mins. Season well with grated nutmeg, then add 3/4 of the cheddar and parmesan, cooking until they are melted. Set aside.

Step 4 In another pan, heat 2 tbsp oil over a medium heat and fry the garlic and chilli for a couple of mins until aromatic. Add the rest of the leeks, season and fry until softened, then add the mixed greens and season a little more. Cook, stirring, until the greens have wilted, about 4 mins, then pour in the wine and cook until it evaporates.

Step 5 Oil a medium roasting tin (about 20cm square) and tip half the greens into the tin. Dot half the walnuts over the top, and nestle in a third of the artichoke hearts. Dot over half the ricotta. Remove the bay leaf from the leek bechamel and pour over a third of it. Top with three lasagne sheets to cover everything in a at layer. Repeat the process, then cover the top layer of lasagne sheets with the remaining bechamel and artichokes and scatter over the remaining cheese. Bake in the oven for 30-40 mins, until golden and bubbling. Rest for 10 mins, then serve with a sharply dressed grated carrot and beetroot salad.

Felsham, Gedding and Friends Group

We are a friendly and informal group which meets in Felsham Village Hall on the first Monday of the month from 2.30- 4.00pm. We chat, provide light refreshments and occasionally have a speaker. We charge a contribution of £2 per head to help cover costs. All we ask is that you let us know in advance that you are coming, so that we can cater accordingly. Details of how to get in touch are below. We also need a new name to distinguish us from Village Friends – suggestions will be most welcome.

Our next meeting is on Monday 6th March at 2.30pm.

If you have any questions and to let us know you'll attend (by Thursday prior to the meeting) please contact Alison Shaw 01284 827034 or via email at amshaw429@gmail.com

We look forward to seeing you.



Domestic Cleaner

available

Tuesday/ Wednesday mornings

(must be within walking distance of shop)

Mobile: 07501905783

To / From Bury St Edmunds			Mon	Tue	Wed	Thu	Fri	Sat	Sun
379	OUTWARD	Felsham Six Bells			10:38				
		Gedding Bus Stop			10:41				
		Bury Bus Station			11:07				
	RETURN	Bury Bus Station, Stand 5			12:55				
		Gedding Bus Stop			13:19				
		Felsham Six Bells			13:22				

We provide holistic and realistic support
for your health and wellbeing

Woolpit Clinics
Established 2013  *Because your health matters*

01359 408 011
woolpit-clinics.co.uk

Woolpit Clinics (was Woolpit Complementary)
 11 Brickfield Business Park, Old Stowmarket Road
 Woolpit, IP30 9QS

Village Directory

ALLOTMENTS	BRIAN FRANCIS	01449 736219
ST PETER'S CHURCH, FELSHAM	REVEREND SHARON POTTER revsharon2@gmail.com	01284 828599
ST MARY'S CHURCH, GEDDING		
CHURCH WARDENS	BRIAN DEARDS (FELSHAM)	01449 737364
	JAMES MORGAN (GEDDING)	01449 737445
DOCTORS SURGERY	WOOLPIT HEALTH CENTRE, HEATH ROAD, WOOLPIT	01359 240298
PHARMACY	WOOLPIT HEALTH CENTRE, HEATH ROAD, WOOLPIT	01359 242394
F&G Community Store & Post Office		01449 736042
F&G FUEL GROUP	pawilson4@btinternet.com	01449 736330
FACEBOOK	FELSHAM & GEDDING COMMUNITY	
FAGENDS	PHILIP COCKELL	01449 736272
FELSHAM CHARITY	TRICIA WILSON pawilson4@btinternet.com	01449 736330
FELSHAM PARISH COUNCIL	SIMON GARROD, CHAIR	01449 737728
	ISABELLE REECE felshamparishclerk@gmail.com	
GEDDING PARISH MEETING	RICHARD VASS - rvass@burland.com	01449 736731
MEMBER OF PARLIAMENT	JO CHURCHILL 10 HATTER STREET, BURY ST EDMUNDS IP33 1LZ	01284 752311
MID SUFFOLK & COUNTY COUNCILLOR	PENNY OTTON penny.otton@suffolk.gov.uk penny.otton@midsuffolk.gov.uk	01449 736482
MID SUFFOLK DISTRICT COUNCIL	NEEDHAM MARKET	0845 606 6170
PLAYING FIELD	PHILIP COCKELL, CHAIR	01449 736272
SHELTERED HOUSING	MID SUFFOLK DISTRICT COUNCIL	01473 826639
POLICE	SAFER NEIGHBOURHOOD TEAM ONE stowmarket.snt@suffolk.pnn.police.uk	101 999 (emergency)
TABLE TENNIS	ADRIAN KING	01449 737495
TREE WARDEN	MARK TAVERNOR, mtavernor@btinternet.com	01449 737793
VILLAGE HALL	ANDREW CONQUEST, CHAIR	01449 737619
	VICTORIA DILLON, CARETAKER	07738 405520
	DAVID SIMPSON, BOOKINGS	07830 020287
VILLAGE WEBSITES	FELSHAM: felsham.onesuffolk.net	
	GEDDING: gedding.onesuffolk.net	
WHIST DRIVE	PAT CLARKE	01449 736202
YOGA	PAT CLARKE	01449 736202