

FELSHAM + GEDDING

february 2024

VILLAGENEWS



ISSUE 240

WELCOME

to the February edition of your Felsham and Gedding Village News.

We have had the wind and the storms and I hope that no one suffered too much damage. As you will recall January and February have been stormy for the last few years so we might have more. On the bright side, the snow drops are coming up and flowering and the daffodils and croci are pushing through which hopefully is a sign that spring is on the way.

Apart from wild croci there are a number of very beautiful collections in the area.

Stay safe and warm!

Libby 😊

****We are looking for more editors!****

Due to changes in circumstances, we are looking for more editors to put the Village News together for the community and support with this and the distribution.

If anyone would like to support their community in this way or any ideas on alternative formats for the Village News, please get in touch with Jo jsthorticulture@btinternet.com or call 01449 737793

Next CopyDate:20/02/2024

Please be aware that items submitted after the deadline cannot be guaranteed to appear in the magazine.

Copy Submissions

Email: fgvillagenews@gmail.com or call Jo Tavernor on 01449 737793

Advertising

Email: fgvillagenewsadverts@gmail.com or call Jo Tavernor on 01449 737793

Compliments, Complaints and Suggestions

The Village News welcomes your feedback. Do you have any comments about what we do, what's going well, anything you'd like us to change?

Newsletter General Policy

We do publish acknowledgements, articles of general interest, artistic works and similar.

We do publish factual material from recognised organisations.

We do publish to the Village Website at <http://felsham.onesuffolk.net>

We do not publish defamatory, rude, blasphemous, racial or other inappropriate material.

We reserve the right to edit contributions to suit publication needs.

We are reliant on contributions from many sources, taken in good faith, and cannot be held responsible for any errors or omissions.

Copyright waiver is presumed implicit on all submissions unless clearly stated otherwise.

??

world cup

STAR WARS

superman

APPLES

1850



Q U V I Z
N I G H T

FELSHAM AND GEDDING VILLAGE HALL

SATURDAY 10TH FEBRUARY 2024

COST - £5 PER HEAD

UP TO 6 PER TEAM - WE WILL ALLOCATE YOU TO A TEAM IF NEEDS BE

HALL OPENS 7PM - QUIZ STARTS AT 7.30

6 BOTTLES OF WINE FOR WINNING TEAM

BAR AND NIBBLES

MC/
QUIZMASTER
MARK
CRAWFORD

TICKETS FROM THE SHOP OR ANDREW CONQUEST ON 01449 737619

Taylor's Solid Fuels LTD

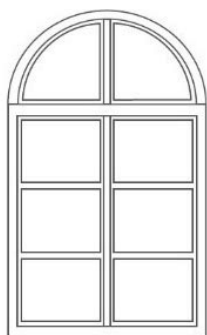
Family run since 1946

**Regular fortnightly Solid Fuel deliveries in your area.
Competitive prices and a full range of products.**

“Don't Shiver We Deliver”

Quality top soils and aggregates. Bulk bags and Tipper loads from 1-20 tonnes

Tel: 01842890568 or see us on www.taylorssolidfuels.co.uk



MILES ROLFE JOINERY

Production, Design & Fitting of All
Aspects of Joinery & Furniture

Gt. Finborough • Suffolk

07880 776845 mobile
mrjoinery@live.com

01449 771338 evening
milesrolfejoinery.co.uk

 Follow me on Facebook

FELSHAM & GEDDING PLAYINGFIELD COMMITTEE

(The Walmsley Jubilee Field)

Registered Charity 272431

Annual General Meeting

Monday 26th February 2024

7.30pm Felsham and Gedding Village Hall

We look forward to seeing you.

If you use the Playing Field please seriously consider joining the committee.

It's informal and fun and as a committee member you will help to set and run the programme of events and improvements for the coming year.



Rothwell's Carpet Cleaning

01638 428 060
www.Rothwells.biz

Carpet Cleaning

Stone Floor, Upholstery & Rug Cleaning.

A few points that make us stand out from the others,

Rothwell's has been in business since 1993.

We're an honest local family firm.

Our large truck mounted machines mean more cleaning
& drying power for the best results possible.

Members of both the NCCA and TACCA.

We will move the furniture for a thorough clean.

100% satisfaction or it's FREE.

Call Oliver and Max Campbell for expert help today.

Rothwell's, Malting End, Kirtling, Newmarket, CB8 9HH

KUTZ 4 MUTZ



**Complete
Professional Dog
Grooming Service**

Stress free 1 to 1
appointments

Individual requirements
catered for.

Bathing, drying, clipping, scissoring, hand
stripping, nails, anal gland relief, ear
cleaning.

CALL JAN 07716 034521

**1, Manor Cottage, Lavenham
Road, Preston St Mary CO10 9LU**

Apple Tree Cottage



**Locally Produced
Naturally Reared
Rare Breed**

Lamb-Hogget-Mutton

**Available from the Village Shop
and at
Apple Tree Cottage
Lower Green, Felsham**

THE FAGENDS PANTO 26TH AND 27TH JANUARY 2024

Fagends' swashbuckling adventure - Robinson Crusoe - was a rip-roaring success. Joanna Charlesworth knocked us all into shape and what a fun time was had by all. Rehearsing two days a week for three months paid off. Here are some photos of the cast in full swing and some selected backstage pics.

Thank you for all your support. Nearly 300 people came and enjoyed the fun helping us raise over £3500 for the hall and the extension and improvements we are looking to make.

Watch this space for the next Pantomime and no doubt a mid-summer comedic event to tickle your fancies







**ALL SORTS OF SIGNS & GRAPHICS
FOR ALL SORTS OF BUSINESSES**

Hollybush Farm Rattlesden IP30 OSU

01449 736619 • 07751 084850 • info@randagraphics.co.uk • www.randagraphics.co.uk

Vinyl Graphics
for Walls,
Floors &
Windows

Canvases,
Hemmed
Banners
& Vinyl
Labels

Rigid
Signs on
All Sorts of
Material



Wallpaper,
Posters,
Backlit Films
& POS

Roll-Up
& Pop-Up
Display
Systems

Decals for
Vehicles,
Plant &
Machinery

A N GILLAM

Building,
All aspects of roofing,
chimney work,
Lime plastering & rendering.
Chimney sweep

*Free quotes,
No job too small,*

The Mouse House,
Bradfield St Clare,
Bury St Edmunds,
Suffolk
IP30 0EL

**Tel 01284 388508
Mob 07961 878564**

CHIMNEY SWEEP

ECO SWEEP CHIMNEY SERVICES

- NEW POWER SWEEPING METHOD USED FOR A MORE THOROUGH CHIMNEY CLEAN THAN BRUSHES.
- INDUSTRIAL HEPA FILTERED VACUUM.
- FULLY INSURED.
- INSURANCE RECOGNIZED CERTIFICATES ISSUED.
- SPOTLESS, RELIABLE AND FRIENDLY SERVICE.
- ALL CHIMNEYS, WOOD BURNERS, AGA, BOILER FLUES SWEEP.
- GUILD OF MASTER SWEEP'S CERTIFICATED MEMBER.



TEL. 01359 232335

WE WILL BE HOLDING A
SPRING CRAFT FAIR
ON SUNDAY 17th MARCH 10am - 4pm



Hot Refreshments



Pancakes

Sweet and Savoury

FROM THE PETITE PANCAKES POD

plus

Traditional tea and

CAKE!



FOR STALL BOOKING INFORMATION

PLEASE CONTACT

SANDY WHITEHEAD

sandy.whitehead13@hotmail.com



07871015370



PARISH REPORT – JANUARY 2024

Councillor

Penny Otton

Thedwastre South

Penny.otton@suffolk.gov.uk

07545 423847

Flooding in Suffolk

Recent high rainfall has led to many Suffolk residents' homes being flooded and flooding more generally on roads. At Council on 7 December, a motion was passed for the council to review the frequency of drain and gully clearance in areas at risk of flooding, and to work closely with districts and boroughs, Anglian Water, and the Environment Agency to help prevent future flooding. My group had hoped to introduce further measures on regularity of maintenance, but this was not supported by the Conservative administration. The motion that was passed was preceded by an announcement by the council of £1m in extra funding to investigate flooding incidents in the county.

Details of a government-funded scheme from DEFRA whereby Suffolk residents can apply for up to £5,000 to help protect their property from future flooding can be found at this link, with applications from January 2024: <https://www.suffolk.gov.uk/about/flood-recovery-information-for-suffolk>

DEFRA's Property Flood Resilience Grant

As well as the initial £500 grant payment and council tax/business rate discounts, residents whose homes have been flooded may also be eligible for up to £5,000 from the Property Flood Resilience (PFR) Grant, which the government requires Suffolk County Council to administer on their behalf. The application process will begin in early 2024 and after initial eligibility checks by SCC, property owners will be responsible for sourcing an independent surveyor and PFR contractor. Payment of up to £5,000 including VAT will be paid retrospectively to the property owner once the Council receives proof of the completed installation and invoicing for the approved measures.

Further information about the grant eligibility, conditions and the forthcoming application process can be found here: <https://www.suffolk.gov.uk/property-flood-resilience-grant>

Local Flooding

I know there have been numerous instances and any reported to the highways website will be investigated. As of today (06/01/2024) I have not had anything through to me. COMBS FORD and Lower Road to Stowmarket has been a major issue.

SCC Carbon Net Zero Ambitions

The council's Scrutiny Committee met on Monday 11 December to review the council's progress towards becoming carbon net zero by 2030. Overall, there had been a 10% reduction in emissions in 2022/23, due to reduced energy use for street lighting (a recent upgrade programme) and reduced gas consumption at SCC property and schools.

However, the council is not on target to be carbon neutral by 2030, at least partially due to the third scope of indirect emissions – this includes emissions by suppliers and contractors used by the council which are difficult to measure accurately and control. The supply chain represents 91% of the council's total footprint, and it has updated its contract terms and conditions to include annual reporting on reducing carbon emissions, and requires suppliers to sign up to its Carbon Charter and Climate Change Commercial Ask.

Getting Children Ready for Education

On Thursday 14 December, the council's Education and Children's Scrutiny Committee met to review the support the council provides to prepare children for school. This includes the county's nurseries and early years providers, health services for 0–5-year-olds and Family Hubs (formerly children's centres).

The Committee acknowledged the good work that was going on in a challenging area and I urged that recruitment of health visitors be prioritised by SCC to fill the current vacancies (21%). However, I am concerned that with proposed cuts this will not happen

Budget.

The council is facing a huge budget deficit and is proposing cuts to childrens services, arts and museums, and councilors' locality fund by £2K PLUS increasing council tax .

I have asked if the cost of not charging for DIY waste has been included and if this will be on the website. Councillors will scrutinize the proposals on Thursday.

Follow us on:

Twitter - [Suffolk Green, Lib Dem & Independent Group \(@SuffolkGLI\) / Twitter](#)

Instagram - https://www.instagram.com/suffolkgli_group/

Facebook - [Suffolk GLI - Green, Liberal Democrat & Independent Group | Facebook](#)

Website - [Suffolk Green, Liberal Democrat and Independent Group – The GLI Group at Suffolk County Council \(suffolkgli.wordpress.com\)](#)

Cost of Living help and advice:

<https://infolink.suffolk.gov.uk/kb5/suffolk/infolink/family.page?familychannel=6>

Benefits advice and support:

<https://infolink.suffolk.gov.uk/kb5/suffolk/infolink/adult.page?adultchannel=0>

THE STABLE at Mullion Barn



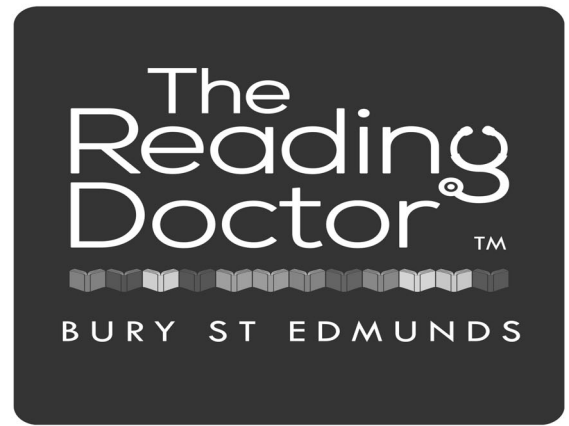
Are your friends or relatives
coming to visit?

Do you need somewhere local
for them to stay?

The Stable at Mullion Barn is an established
private self-catering 1-bedroom holiday let
at our converted 17th century barn in Hesselton

Go to www.mullionbarn.com for more info

Contact Debbie for availability and prices via email
mullionbarn@gmail.com or call 07881 806823



**bespoke reading and
writing tuition**



face to face • online • schools



@thereadingdoctorburystedmunds

Contact Louisa 07761 737 649

louisa@thereadingdoctors.com

Keith Bedwell's Building Services

Traditional Lime & Hair Plastering
Plastering & Rendering
Floor & Wall Tiling
Renovation & Restoration Work
General Maintenance

Call: 01449 257806
Mobile: 07870 371520

Email: info@keithbedwell.co.uk
Facebook: Keith Bedwell Building Services
Website: www.keithbedwell.co.uk



Whist

You are welcome to join us at our monthly whist drive, held of 3rd Friday of the month in Village Hall.

Next date: Friday 16 February 2024

Game starts at 7.30 so arrive 7.15.

£2 admission plus raffle, please bring a small prize.

Refreshments at half time.

FELSHAM & GEDDING VILLAGE HALL SOCIAL CLUB
PRESENTS A FILM EVENING
ON

SATURDAY FEBRUARY 17TH

EMPIRE OF LIGHT

A ROMANTIC DRAMA SET IN THE 1980'S

UK 2002

PG 15

The film show starts at 7.30 pm and the bar and hall will be open from 7pm

New members and guests are very welcome to join us.

February 2024

<i>MONDAY</i>	<i>TUESDAY</i>	<i>WEDNESDAY</i>	<i>THURS</i>
			MERMAID FISH VHCP 5.50 -
5 F&G & FRIENDS GROUP VH 2.30PM	6	7 TABLE TENNIS VH 7.30PM	MERMAID FISH VHCP 5.50 -
12	13 PARISH COUNCIL, 7.30PM, VH	14 11am Communion and Ashing, St Peters, Felsham CARPET BOWLS VH 7.30PM	VILLAGE FRIENDS VH 2.00PM MERMAID FISH VHCP 5.50 -
19	20	21 TABLE TENNIS VH 7.30PM	MERMAID FISH VHCP -5.50
26 PLAYINGFIELD AGM, VH 7.30PM	27	28 CARPET BOWLS VH 7.30PM	

VH - Village Hall VHCP -Village Hall Car Park

<i>DAY</i>	<i>FRIDAY</i>	<i>SATURDAY</i>	<i>SUNDAY</i>
1 BROWN BIN & CHIPS 6.30PM	2 FRESH FISH VHCP 10.30 AM RECYCLING BIN	3	4 6pm Six2seven - VH
8	9 FRESH FISH VHCP 10.30 AM Library Van: 10.10 Gedding 11.40 VHCP BLACK BIN	10	11
15 BROWN BIN & CHIPS, 6.30PM	16 FRESH FISH VHCP 10.30 AM WHIST NIGHT, VH 7.15PM RECYCLING BIN	17 FILM NIGHT, VH, 7.30PM	18 10am Morning Worship, St Peters, Felsham
22 & CHIPS 6.30PM	23 FRESH FISH VHCP 10.30 AM BLACK BIN	24	25 10am BCP, St Marys, Gedding

COCKFIELD BENEFICE SERVICES AND EVENTS FEBRUARY 2024

Sunday 4 February Second before Lent	<p>9.30am Communion CW - Stanningfield</p> <p>11am Communion CW - Bradfield St Clare</p> <p>6pm Six2Seven - Felsham Village Hall</p>
Sunday 11 February Sunday next before Lent	<p>10am Morning Prayer CW - Cockfield</p> <p>10.30am Communion CW - Bradfield St George</p> <p>6pm Praise & Worship - Gt Whelnetham</p>
Wednesday 14 February Ash Wednesday	<p>11am Communion & Ashing - Felsham</p>
Sunday 19 February First in Lent	<p>9.30am Morning Prayer CW - Stanningfield</p> <p>10am Morning Worship - Felsham</p> <p>10.30am Communion CW - Cockfield</p> <p>4pm Evening Prayer CW - Bradfield St Clare</p>
Saturday 24 February	<p>2-4pm 'Knit & Natter' - Bradfield St Clare Village Hall</p>
Sunday 25 February Second in Lent	<p>9.30am Communion CW - Gt Whelnetham</p> <p>10am Worshipping Together - Bradfield St George</p> <p>10am Communion BCP - Gedding</p>

*Please note these services may be subject to change – for up-to-date service times see
the benefice website at www.cockfieldbenefice.com*

A service of Celtic Morning Prayer is normally held every Tuesday at Cockfield at 9am and
at Stanningfield every Thursday at 9am.

For more details contact Canon Sharon, revsharon2@gmail.com, 01284-828599 or
07825086063

Dear friends

I may have written before about my dislike of the month of February. It feels as though Spring is a long way off, and we often experience cold temperatures and snow in this month. However, there are some bright spots on the horizon for those of us who are averse to the second month of the year. One of them is Shrove Tuesday, otherwise known as Pancake Day!

Shrove Tuesday is the day before Ash Wednesday, which is the first day of Lent. We are holding the annual Ashing service in Felsham this year at 11am on 14th February so do come along if you can! Lent is an important time for Christians around the world, and is a time of solemn observance and preparation for marking the death and resurrection of Jesus at Easter.

From its start until its conclusion on Easter Sunday, Lent has traditionally been a time for fasting or giving something up. Just as we prepare for events in our personal lives such as birthdays or weddings, we are invited during Lent to make our hearts and minds ready for remembering Jesus' life, death and bodily resurrection.

These days, Christians around the world observe Lent in many ways. I like to hold a 'Lent Course' every year, where anyone can come and join a group which thinks about the Christian Faith and studies the Bible. It's a great way of learning more about what it means to be a follower of Jesus.

In recent years, Christians have been taking up challenges such as making a generous act every day through Lent. Our schools often take up Lent challenges such as fundraising for various charities.

If you would like to know more about Lent/Easter or anything else about Christianity, don't hesitate to get in contact with me!

with every blessing

Sharon
Canon Sharon Potter,
revsharon2@gmail.com, 01284 828599



welcome

to

Morning Worship

at

St Peter's, Felsham

Every third Sunday of the month

Faith, Friendship & Fun

10am start with refreshments (fresh coffee
& biscuits - and sometimes cake!)

Finish by 11am

All welcome!

For more details contact Canon Sharon

01284 828599, 07825 086063

email: revsharon2@gmail.com

for more details of all services visit

www.cockfieldbenefice.com

VILLAGE FRIENDS

The next meeting will be on
Thursday 15 February at 2pm
at Felsham and Gedding Village Hall

This month we will be making pancakes!

*Village Friends is an over 65's friendship group of men and women from various villages
who meet once a month*

All welcome, just come along

If you require transport please contact:
Canon Sharon 01284-828599 or 07825 086063 revsharon2@gmail.com or
Susan Metcalf 07925 867221
st.metcalf@btinternet.com

Sponsored by the Cockfield Benefice



January Achievements

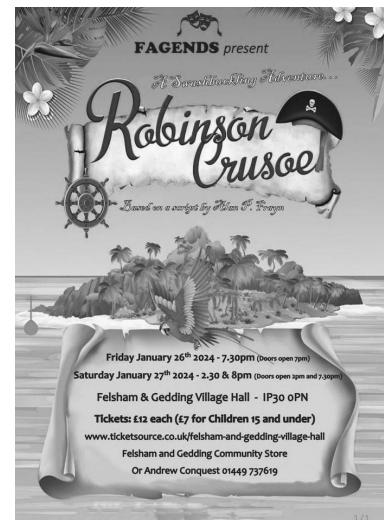


There are too many achievements of everyone from Felsham and Gedding so congratulations to everyone for what has been achieved this January, we are off to a great start of the year!

To name just two of these incredible achievements:

Robinson Crusoe - FAGENDS

What a show! Congratulations to everyone involved with the pantomime, you certainly didn't disappoint your sold-out crowd!



Jamie Stringer has raised over £1,400 for Mind



On New Years Day, Jamie set off from Bury St. Edmunds on a 400 mile trek to Dublin raising money for Mind in memory of his mother Jean Stringer who passed away last year.

SPANISH



Can you order your
"cerveza, vino y tapas?"



I CAN TEACH YOU!

Phone **Andrea**
on **01449 736955**

FELSHAM AND GEDDING VILLAGE HALL

Available For Hire

Large Main Hall

Separate Room

Fully Licensed Bar Available

Fully Equipped Kitchen

Stage Available By Arrangement

Ample Car Parking

Reasonable Rates

For Bookings Call 07830 020287

Wifi Available – Password On Request

Valley Farm Piano and Cello Tuition



Experienced, qualified
teacher/professional accompanist.

Teaching all ages: beginners to advanced.



Accompanist for concerts, exams, rehearsals.

Contact: **Nicola Brazier.GRSM(Hons) ARCM LGSM**

Tel: 01449 737458

Mob: 07531795064

Email: nicobraz@hotmail.co.uk

I've built up a bit of debt and I am panicking. Even though I cut back, Christmas was expensive, my rent has gone up and my pay cheque just doesn't stretch as far as it used to. I'm doing everything I can but it's not enough - what can I do?

First of all, it's important to know you're not alone in finding things difficult and, crucially, there's support available.

You say you've built up a bit of debt. The first step is to collect all the information you have about your debts. This might include contracts, bills and statements.

Next, make a list of your debts and write down the details of each. This could include whom you owe the money to (this person/company is your 'creditor'); when you first missed a payment; and how much you now owe. You'll also need to make a note of your account or reference number and what steps the creditor has taken to get the money back, eg. sending you letters.

It might feel overwhelming when you see all your debts written down - but try not to worry, the important thing is that you're sorting them out.

If you're behind on household bills, prioritise paying your rent or mortgage, plus energy bills and Council Tax first. Not paying these bills has the most serious consequences. You should speak to the person or company you owe money to, to see if there are any manageable steps you can take to start reducing your debt.

Once you've got these debts under control, you should look at any other debts like credit card or store card debts, payday loans or missed Buy Now Pay Later payments. While you're looking at the money going out, do remember to consider money that could be coming in. It's always worth checking if there are any benefits that you're eligible for, including support with your energy costs and living costs.

There's a benefits calculator, advice on how to reduce living costs and information on other ways to increase your income on the National Citizens Advice website at citizensadvice.org.uk

There's also emergency support that you may be able to access locally, such as a food bank, local welfare support or fuel vouchers. We know that times are incredibly tough but please remember, you don't have to face this alone.

Citizens Advice Mid Suffolk can provide in depth advice on this issue and much more, including debt, finances, employment, benefits and family/relationships. You can contact them by phone on 01449 676060, visit in person at Milton House, 5 Milton Road South, Stowmarket IP14 1EZ or use the contact form at midsuffolkcab.org.uk/contact-us. Opening hours are Monday-Thursday 9.30am – 3.30pm and Friday 9.30am – 12.30pm.

An evening with Charlie Haylock



A fascinating evening with Suffolk author and dialect expert Charlie Haylock who will take us behind the scenes of the Netflix hit film *The Dig*

Saturday 23rd March
Brettenham Village Hall
7pm for 7.30pm start

Ticket price includes the talk, a two course meal and showing of the film 'the Dig' on Saturday 16th March



Photo: Larry Horricks, Netflix 2021

Tickets: £20
01449 736412
annie_tav@hotmail.com

An evening with Charlie Haylock



Join us for a fascinating evening with Suffolk author and dialect expert Charlie Haylock who will take us behind the scenes of the Netflix hit film *The Dig*

Saturday 23rd March
Tickets £20

Ticket price includes the talk, a two course meal and showing of the film 'the Dig' on Saturday 16th March



Photo: Larry Horricks, Netflix 2021

We will be showing the film on Friday March 16th, and Charlie will talk about it on the evening of 23rd March. The evening will combine a meal and talk by Charlie, and include the film showing the week before.

The movie tells the story of an unlikely hero, Basil Brown of Ipswich Museum, the self-taught archaeologist and modest man who discovered the Sutton Hoo treasure, the most magnificent ever found in this country. We will enjoy an intriguing and sometimes hilarious look at *The Dig*.

Historian and author Charlie will explain how a potential "scam" email from the film producer turned out to real and was followed by a personal call from actor Ralph Fiennes. He will show how Ralph Fiennes, who played Basil Brown, and the other "Suffolk" actors learnt their Suffolk accent and managed not to sound like West Country pirates! He will also explain the extreme lengths that Fiennes took not only to play Basil Brown.... but to become him. It looks set to be an entertaining evening for all!

Please contact **Annie Tavener** for tickets
01449 736412 email annie_tav@hotmail.com

They're back!



The shantytfolk



SHANTIES, FOLK AND FOOD

8TH MARCH 2024 - 7:30PM

A REPERTOIRE OF MANY SHANTY AND FOLK SONGS
BRADFIELD ST GEORGE VILLAGE HALL (PAY BAR)

£15 PER TICKET, TO INCLUDE 2 COURSE MEAL AND ENTERTAINMENT

CONTACT ISOBEL ON 01284386169 OR 07888649809 (BEFORE 4TH MARCH)

TICKET AND RAFFLE IN SUPPORT OF BRADFIELD ST CLARE CHURCH

SCAN THIS QR
CODE TO SEE
WHAT THE
SHANTYFOLK
ARE ALL ABOUT





Stowmarket
Chorale

Music Director
William Baldry

COME AND SING!

Vivaldi

Gloria

L'Estrange

Love's Philosophy

Saturday 10th February 2024

10.30am - 3.00pm

John Peel Centre

Stowmarket, IP14 1ET

£20 to include music score

(bring your own food)

**John
Peel**

CENTRE FOR
CREATIVE ARTS

Booking: 07912 432220

tickets@stowmarketchorale.org.uk

making
music



Registered Charity 280488

www.stowmarketchorale.org.uk



*Beauty
by
Megan*

Megan is a Beauty Therapist with 19 years experience.

I work from my log cabin, a rural retreat in Hitcham.

With off road parking.

Treatments are by appointment only.

You are guaranteed complete privacy and your treatment time is exclusively for you.

A variety of treatments include:

Dermalogica facials/Spray tanning/Waxing/Eye treatments/Jessica manicures & pedicures/Jessica Gel Nails/

Foot health maintenance

LVL Eyelash perming/Reflexology

NEW TREATMENTS NOW AVAILABLE

HD Brows & HD Lamination

Cryotherapy – skin lesion removal using the freezing technique

Skin tags/warts/verruca/cherry angiomas

Please contact me for any enquiries or for a full price list.

Megan Pryke VTCT, BABTAC 07876 717 008

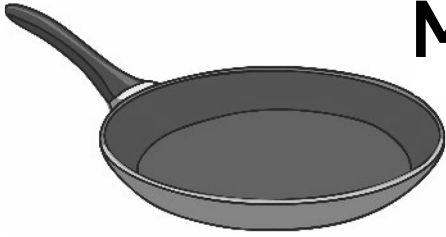
megz_pryke@hotmail.com

Facebook: Beauty by Megan (look for my logo)

Instagram: [beautybymegan_suffolk](https://www.instagram.com/beautybymegan_suffolk)

Making a Pancake

Word Search



m p p j o q k l a g
l a a b u m y e x s
w n n t u g g m c y
c y c c y t x o x r
y j a s o i t n f u
r d k u u p b e d p
m d e g f l o u r k
i k t a v e g g s f
l y w r b o w l u v
k f h s p o o n a v

pancake

lemon

sugar

syrup

milk

eggs

flour

butter

bowl

jug

spoon

pan





VACANCIES FOR PARISH COUNCILLORS

The recent resignation of some of our councillors have resulted in several vacant seats on Felsham Parish Council.

The Parish Council are now looking to co-opt local residents to fill the vacancies.

NOBODY cares more about your community than you and your local council do!

Its residents, roads, services, airspace, countryside and developments

Are you over 18?

Do you live within three miles of Felsham or work here?

Are you on the Electoral Roll?

Are you interested in helping to improve the quality of life of your community?

Do you want to be involved in making important decisions in your community?

If you can answer yes to these questions, then Felsham needs you.

Please contact the Clerk if you would like to be considered for a position or need more information.

felshamparishclerk@gmail.com

To / From Bury St Edmunds		Mon	Tue	Wed	Thu	Fri	Sat	Sun
379	OUTWARD	Felsham Six Bells			10:38			
		Gedding Bus Stop			10:41			
		Bury Bus Station			11:07			
	RETURN	Bury Bus Station, Stand 5			12:55			
		Gedding Bus Stop			13:19			
		Felsham Six Bells			13:22			

DO YOU ENJOY READING THE VILLAGE NEWS?

The Village News is currently run by Tricia Wilson (Chair) and Jo Tavernor (Secretary and Treasurer).

Our editors are Libby, Phil, Serena and Neil.

We have a fantastic team of volunteer deliverers and are well supported by our advertisers.

We currently have money in the bank, but since Covid have not been breaking even, so are running at a small operating loss.

At present we print monthly on a leased printer at the Village Hall. This lease is coming to an end in September 2024.

WE NEED HELP

Tricia and Jo will be standing down when the printer lease ends, and Libby has just completed her last Village News.

SO – if you wish to see the Village news continue, we need volunteers to take it on and drive it forward into the next decade.

This is a wonderful opportunity for someone who would like to completely review the current business model, possibly re-invent how the Village News is currently run and offered out to our community.

ARE YOU INTERESTED?

To discuss, please contact Jo Tavernor on 01449 737793 or email at jsthorticulture@btinternet.com

Village Directory

ALLOTMENTS	BRIAN FRANCIS	01449 736219
ST PETER'S CHURCH, FELSHAM	REVEREND SHARON POTTER	01284 828599
ST MARY'S CHURCH, GEDDING	revsharon2@gmail.com	
CHURCH WARDENS	BRIAN DEARDS (FELSHAM)	01449 737364
	JAMES MORGAN (GEDDING)	01449 737445
DOCTORS SURGERY	WOOLPIT HEALTH CENTRE, HEATH ROAD, WOOLPIT	01359 240298
PHARMACY	WOOLPIT HEALTH CENTRE, HEATH ROAD, WOOLPIT	01359 242394
F&G Community Store & Post Office		01449 736042
F&G FUEL GROUP	pawilson4@btinternet.com	01449 736330
FACEBOOK	FELSHAM & GEDDING COMMUNITY	
FAGENDS	PHILIP COCKELL	01449 736272
FELSHAM CHARITY	TRICIA WILSON pawilson4@btinternet.com	01449 736330
FELSHAM PARISH COUNCIL	SIMON GARROD, CHAIR	01449 737728
	ISABELLE REECE felshamparishclerk@gmail.com	
GEDDING PARISH MEETING	RICHARD VASS - rvass@burland.com	01449 736731
MEMBER OF PARLIAMENT	JO CHURCHILL 10 HATTER STREET, BURY ST EDMUNDS IP33 1LZ	01284 752311
MID SUFFOLK DISTRICT COUNCILLOR	NICKY WILLHERE Nicky.willshere@midsuffolk.gov.uk	
COUNTY COUNCILLOR	PENNY OTTON penny.otton@suffolk.gov.uk	01449 736482
MID SUFFOLK DISTRICT COUNCIL	NEEDHAM MARKET	0845 606 6170
PLAYING FIELD	PHILIP COCKELL, CHAIR	01449 736272
SHELTERED HOUSING	MID SUFFOLK DISTRICT COUNCIL	01473 826639
POLICE	SAFER NEIGHBOURHOOD TEAM ONE stowmarket.snt@suffolk.pnn.police.uk	101 999 (emergency)
TABLE TENNIS	ADRIAN KING	01449 737495
TREE WARDEN	MARK TAVERNOR, mtavernor@btinternet.com	01449 737793
VILLAGE HALL	ANDREW CONQUEST, CHAIR	01449 737619
	VICTORIA DILLON, CARETAKER	07738 405520
	DAVID SIMPSON, BOOKINGS	07830 020287
VILLAGE WEBSITES	FELSHAM: felsham.onesuffolk.net	
	GEDDING: gedding.onesuffolk.net	
WHIST DRIVE	PAT CLARKE	01449 736202